



Component to hold and insert a straight tool like a needle, associated device for interactive positioning

KEYWORDS

Tool inserter
Mini-invasive surgery
Remote Control
Robotics

PATENT

French patent application
FR1561373
filed on 25/11/2015

LAB

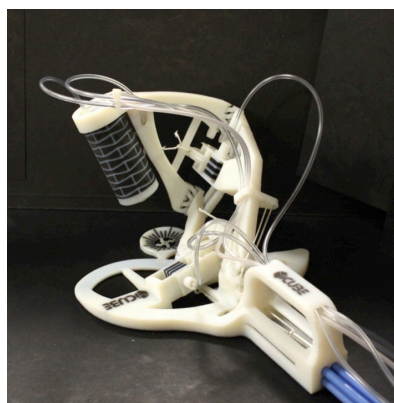
P. Renaud

ICube
UMR 7357
Strasbourg, FR

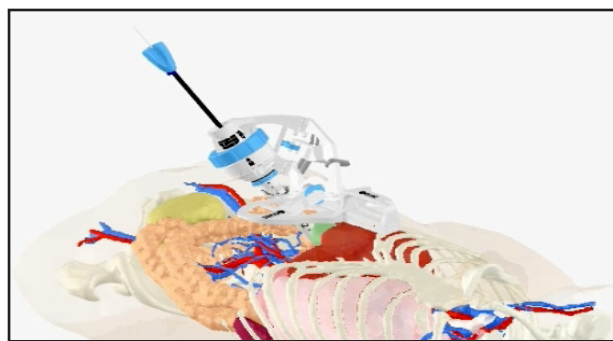


TECHNOLOGY

- Pneumatic translator
- Plastic device for positioning tool
- Remote controlled
- Compact device, set on target



Needle manipulator



Endoscope holder

APPLICATIONS

- Mini-invasive surgical procedures : needle holder, biopsy, endoscope holder catheter insertion
- Interventional radiology : IRM, X-ray compatible
- Industry : precision manufacturing, ATEX compatible

ADVANTAGES

- Plastic: single-use, X-Ray transparent, IRM compatible
- Remote: dangerous environments (radiations, explosive atmosphere)
- Follows patient motion (light-weight and patient-mounted)
- One device for several tasks
- Interactive manipulation to take advantage of real-time image feedback

DEVELOPMENT STATUS

- Laboratory prototype developed in cooperation with interventional radiologists, proof-of-principle

Partnership : Looking for a license-taker / collaboration partner

CONTACT

Veronika Vallion
Business Developer

Phone: +33 (0)6 10 07 00 19 - veronika.vallion@satt.conectus.fr